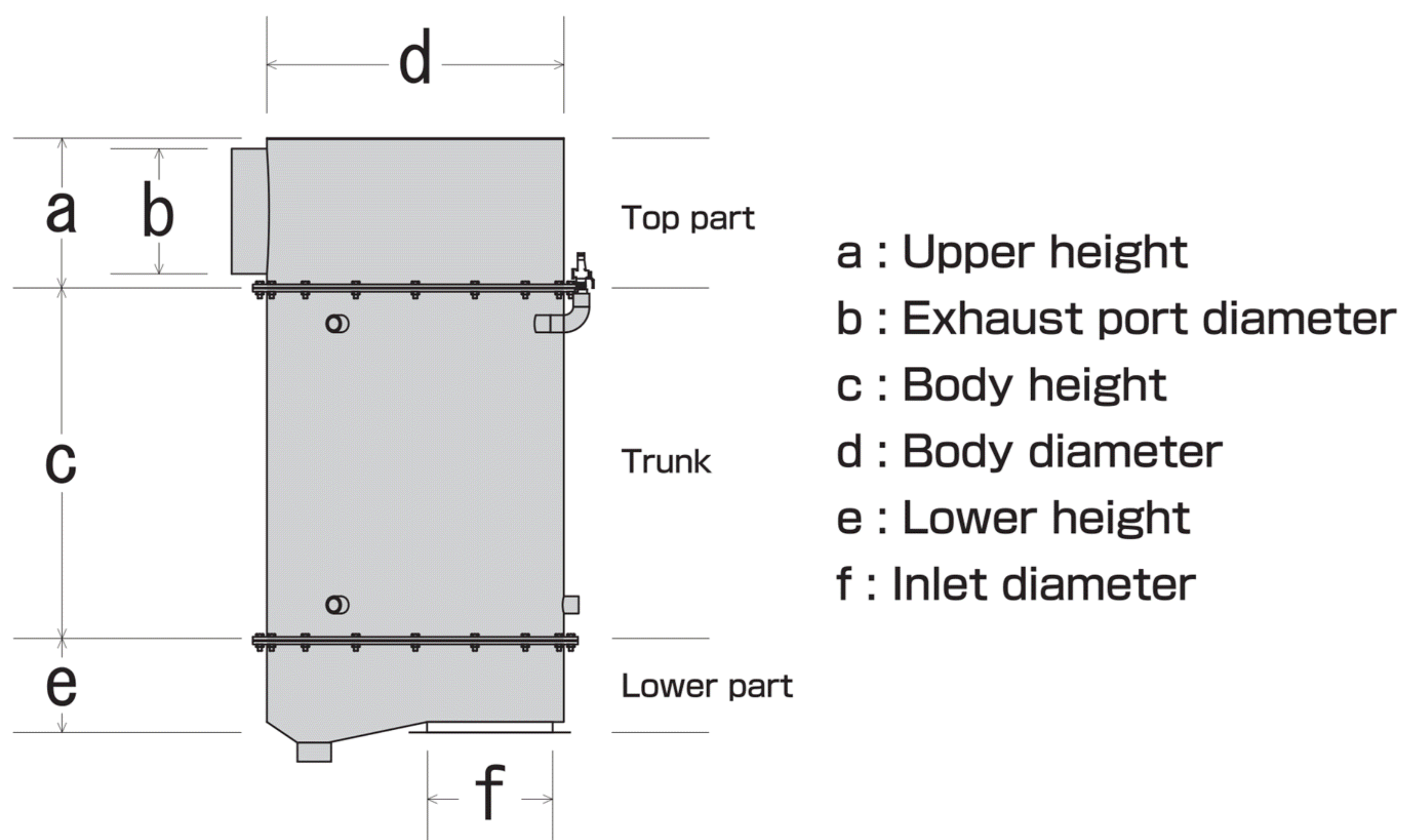


# Structural features

## Economax dimension symbols



## Economax dimension table (Unit: mm)

Approximate boiler steam volume	Top part		Trunk			Lower part	
	(a)Height	(b)Exhaust port $\phi$	(c)Height	(d)Diameter	Number of smoke pipes	(e)Height	(f)Air intake $\phi$
300~650	342	~268	1006	708	45	230	~268
~800	342	~268	1006	808	60	240	~268
~1500	428	~356	1006	942	93	280	~356
~2000	480	~406	1006	1110	129	310	~406
~2400	530	~440	1006	1200	153	340	~440
~4000	580	~508	1006	1340	204	380	~508
~5000	682	~610	1006	1580	294	450	~610

※These specifications are subject to change without notice in the case of revisions to the regulations or improvements. Thank you for your understanding.

**Manufacture and sales** Boiler manufacturing licensed factory approved by the Ministry of Health, Labour and Welfare  
 Member of Japan Small-Scale Once-through Boiler Association (Public Interest Incorporated Foundation)  
 Member of Japan Boiler Association (General incorporated association)

**NK Nihon Kikan Co., Ltd**

2513-1 Ishibuchi, Oaza-Suehiro, Usuki City, Oita 875-0022  
 TEL : 0972-63-8848 FAX : 0972-63-8849  
 E-mail : info@nihon-kikan.com  
 URL : <https://nihon-kikan.com>  
 Tokyo sales office TEL : 048-229-0858  
 Sales office : Tokyo & Saitama

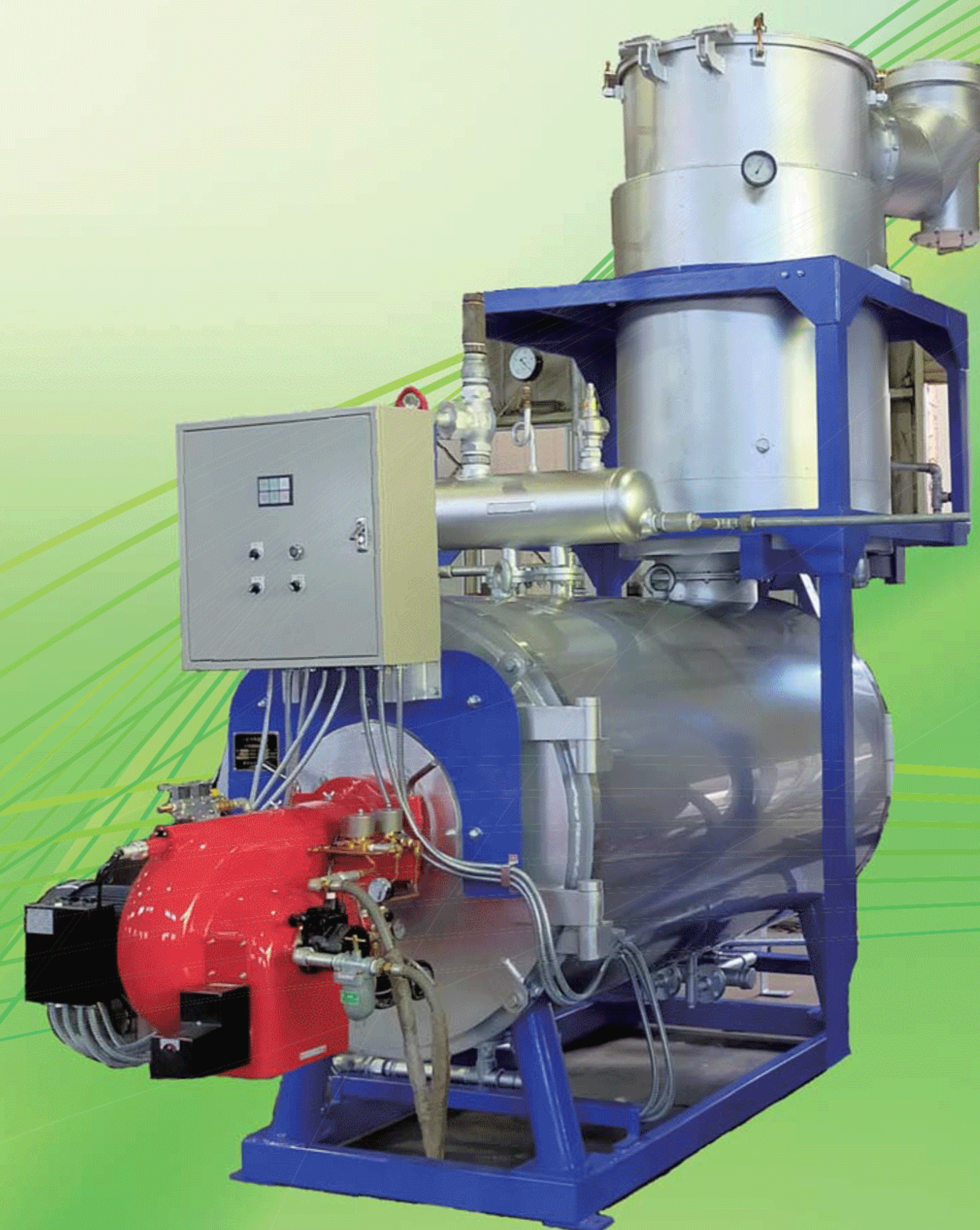
Agent

[International and domestic patents acquired]  
Japan, EU, U.S.A. and China

# ECONOMAX

## Exhaust heat exchanger (economizer)

Energy efficiency is increased by utilizing exhaust heat, and water supply temperature is increased from 15°C to 100°C.  
 Easy maintenance and high environmental maintenance.  
 Environmentally friendly with exhaust heat reduction.



Example of horizontal boiler installation



**Nihon Kikan Co., Ltd**



# Comparison of Carbon Conservators (economizers)

**[International and domestic patents acquired]  
Japan, EU, U.S.A. and China**

Economizers up to now	ECONOMAX
Water tube type (fin)	Flue pipe 3 pass (high efficiency)
Impossible to clean (Expendable item to be disposed of after approx. 3 years)	Washable with water (*over 10 years)
15°C → Approx 40°C · 55°C → Approx 80°C	15°C → Approx 100°C · 90°C → Approx 140°C

※The duration varies depending on the characteristics of the fuel (components contained) to be received.

# ECONOMAX

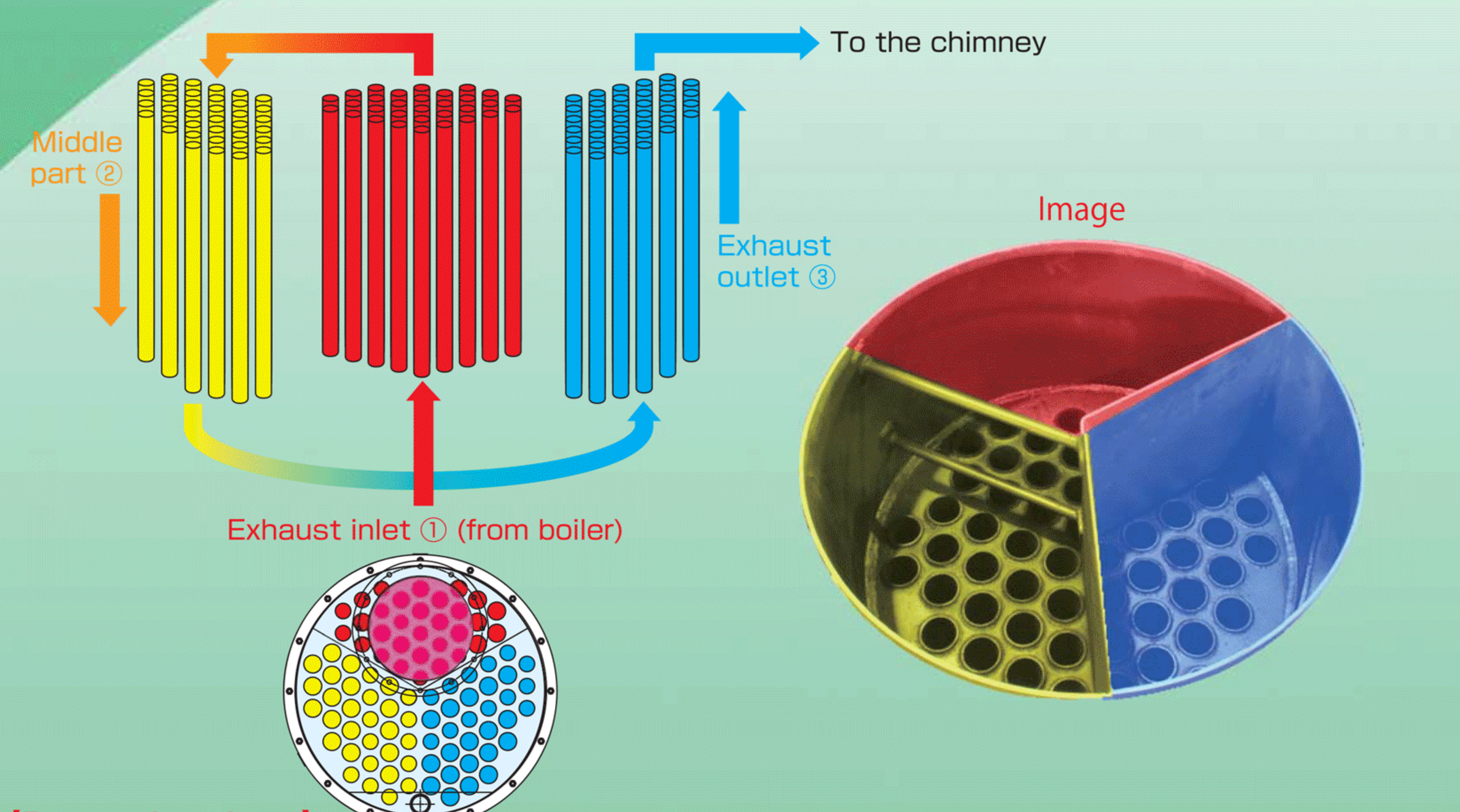
If the temperature of supplied water is normal water temperature of 15°C, the water supply temperature rises to 90°C.  
With the drain recovery system, the water supply temperature rises from 90°C to 140°C.

**Vertical Heavy oil A measurement**

**15°C → 98°C**  
Heat exchange outlet temperature [140°C]

**Drain recovery method Vertical type heavy oil A measurement**

**90°C → 140°C**  
Heat exchange outlet temperature [140°C]



- [Patented products]**
- Because of the pressurization, the water does not boil even when the temperature exceeds 100°C. (Air bubbles are not formed)
  - The lid can be opened for easy maintenance to maintain high efficiency.
  - Highly efficient 3-pass heat exchange for high-temperature hot water and low-temperature exhaust. (NOx reduction)

